



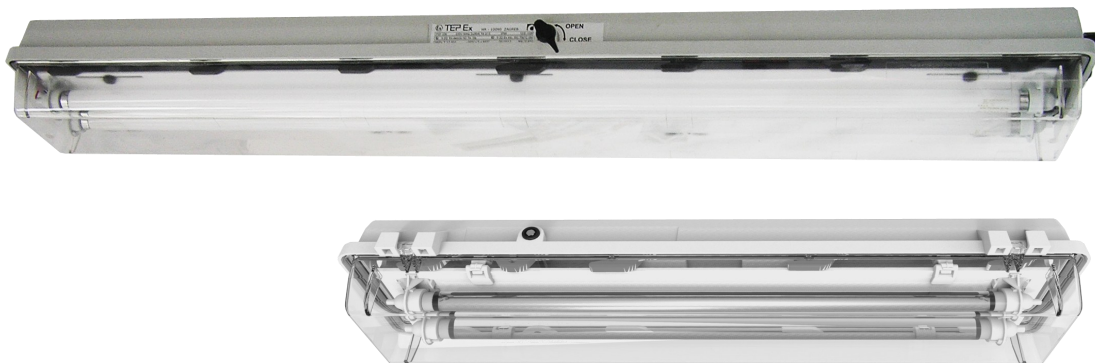
IP 66



IK08

T_a

-20 +50



CONSTRUCTION

Housing: SMC polyester plastic reinforced with glass fiber, color RAL 7038


Diffuser: PC polycarbonate plastic

Gasket: silicone

Central locking: can be opened/closed using a socket key SW8, hinged lamp cover

The light fitting is normally supplied without light sources, socket key screw, two Ex e cable glands M25, two Ex e plugs M25 and with four ring screw M8 (pendant version).

TECHNICAL DATA

Certificate:	EXA 13 ATEX 0014, EAC RU C-HR.AB24.B.03249
Marking:	CE 0722
Apparatus category:	II 2GD
Marking of explosion protection:	 Ex d e mb IIC T4 Gb Ex tb IIIC T80°C Db
Ambient temperature:	-20°C ≤ T _a ≤ +50°C [ATEX] -50°C ≤ T _a ≤ +40°C [EAC]
Degree of protection:	IP 66, category 1
Resistance to shock:	IK 08
Protection class :	I (protective earthing)
Rated voltage:	220...240 V (±10%)
Frequency:	50/60 Hz
Power factor:	λ=0,95
Ballast lumen factor:	98%
Light output ratio:	η=0,72% - 0,78%
End of life switch:	The electronic ballast, type SMP 07/12 fulfills the requirements according to IEC 61347-2-3 (simulation of the "end of life effect" of fluorescent lamps)
Estimated service life:	70 000 h at T _{amb} =40°C
Connecting terminals:	L1, L2, L3, N, PE - max. 2,5 mm ²
Cable entry:	Two entries Ex e M25x1,5 for cable diameters Ø6-15 mm, and two Ex e plugs
Through wiring:	3 x 2,5 mm ² , max. 16 A, or looping of the cables (entry and exit on one side)
Packing:	The packing contains: 1 pcs PSF 218 : 825x270x210 mm PSF 236 : 1420x270x210 mm PSF 258 : 1700x270x210 mm

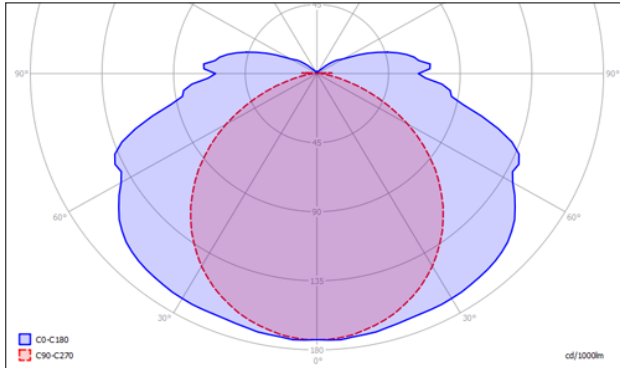
- T8 fluorescent lamps in parallel configuration
- Central locking
- Switch with safety lock; when opening the central lock, all poles of the voltage supply to the ballast are disconnected
- In case of a lamp fault, the electronic ballast disconnects the defective lamp from the power supply.

Fluorescent light fitting

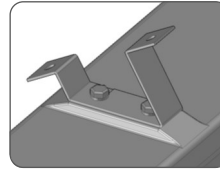
MODEL CODE

Model code	Max. Wattage	Lamp type	Nominal voltage	Luminous flux [lm]	Lamp holder	Nominal operational current	Weight
PSF 218	2x18 W	T8	220 - 240 V	2 x 1350	G13	0,18 A	7,5 kg
PSF 236	2x36 W			2 x 3350		0,33 A	10 kg
PSF 258	2x58W			2x 5200		0,5 A	12 kg

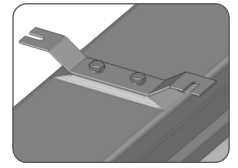
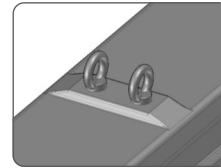
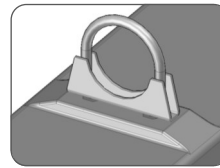
POLAR CURVE



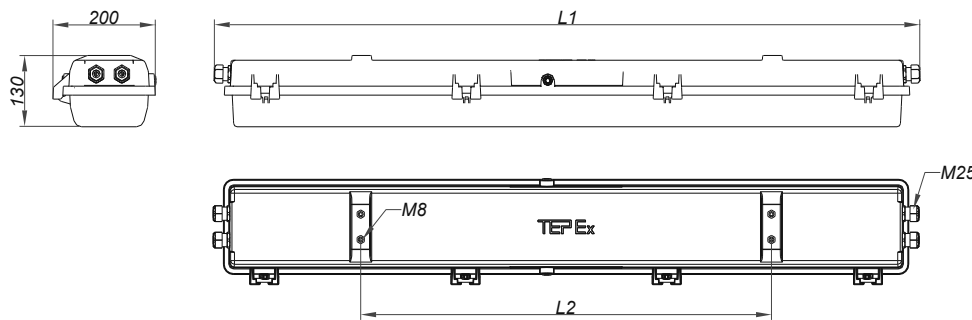
MOUNTING



Pendant, on pipe, wall, ceiling



DIMENSION DRAWING (all dimensions in mm)



	L1 [mm]	L2 [mm]
PSF 218	750	400
PSF 236	1370	800
PSF 258	1665	800

SPARE PARTS AND ACCESSORIES

Sketch	Description	Code	Sketch	Description	Code
	Diffuser PSF	PSF218 10-120 PSF236 20-120		Ex e cable gland SPU 25	SPU 25
	Gasket PSF	PSF218 10-130 PSF236 20-130		Ex e plug M25	SPC 25
	Internal reflector with lamp holder PSF	PSF218 10-140 PSF236 20-140		PSF Ceiling mounting set	PSF 30-110
	El. ballast SMP 07/12	SMP 06/12		PSF Pipe mounting set	PSF 30-120
	Terminals 5x2,5mm ²	PSF236 20-150		PSF Wall mounting set	PSF 30-130
	Socket key SW8	PSF236 20-160		Ring bolt M8	PSF 30-140