

E27



IP 66



IK08



- Low weight/3,5 kg
- Up to 70W HSE (5900 lm)


**CONSTRUCTION**

Housing: aluminium powder painted casting

Diffuser: borosilicate glass

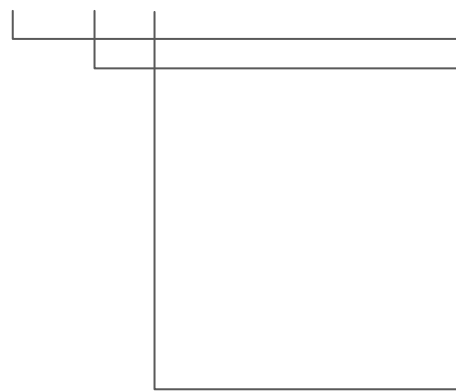
Accessories: protected galvanized steel gird (INOX on request), assembly kit for wall, pipe and ceiling mounting

**TECHNICAL DATA**

<b>Certificate:</b>	EXA 14 ATEX 0056X and 0056X/1 RU C-HR.AB24.B.03245
<b>Marking:</b>	CE 0722
<b>Apparatus category:</b>	II 2GD
<b>Marking of explosion protection:</b>	 Ex d e IIC T6-T3 Gb Ex d IIC T6-T3 Gb Ex tb IIIC T80°C - T155°C Db
<b>Ambient temperature:</b>	-20°C ≤ T <sub>a</sub> ≤ +40°C [ATEX] -50°C ≤ T <sub>a</sub> ≤ +40°C [EAC]
<b>Degree of protection:</b>	IP 66, category 1
<b>Resistance to shock:</b>	IK 08
<b>Protection class :</b>	I (protective earthing)
<b>Rated voltage:</b>	230V AC PLFM FLASH - see model code table
<b>Frequency:</b>	50Hz (60Hz on request)
<b>Rated power:</b>	See model code table
<b>Light output ratio:</b>	η=0,75%
<b>Cable entry:</b>	2 x M20x1.5 II 2G Ex d e IIC Gb, II 2D Ex tb IIIC Db ADP 23/1 II 2G Ex d e IIC Gb, II 2D Ex tb IIIC Db
<b>Connecting terminals:</b>	L, N, PE; max. 2 x 2,5 mm <sup>2</sup> solid, flexible terminal for external -PA connection; max 2x6 mm <sup>2</sup>
<b>Weight:</b>	3,5 kg → PLFM 100/., PLFM FLASH-. 4,5 kg → PLFM 20 LED-., PLFM 70 HSE-.
<b>Packing:</b>	The packing contains: 2 pcs 340x260x170 mm

# Pendant light fitting

**PLFM** ... - .



## Basic type code

### Maximal wattage and type of sources:

- 100 - A incandescent lamp 100W max,  
A ECO halogen lamp 105W max,  
QT halogen lamp 100W max.
- 100/1 - LME mixed discharge lamp 100W max.
- 100/2 - TC-SB compact fluorescent lamp 23W max.
- 100/3 - LED BULB lamp 15W max.
- 20 LED - LED MODUL special 20W max.
- FLASH - XENON MODUL special 5W max.
- 70 HSE - HSE-I high pressure sodium discharge lamp 70W,  
HSE-II high pressure sodium discharge lamp 50W.

### Type of entries:

- 1 – indirect entry – type with Ex e junction box,
- 2 – indirect entry – type with Ex d adapter ADP 23/1,

## MODEL CODE

Model code	Max. wattage	Lamp type	Nominal voltage	Luminous flux	Lamp holder	Temp. class (gas)	T <sub>0</sub> MAX (dust)
						T <sub>a</sub> =40°C	T <sub>a</sub> =40°C
PLFM 100 - .	100 W	A	230V	1340 lm	E27	T4	130°C
	116 W Osram 105 W Philips	A ECO	230 V	2135 lm Osram 1980 lm Philips	E27	T4	130°C
	100 W	QT	230 V	1800 lm Osram	E27	T4	130°C
PLFM 100/1 - .	100 W	LME	230 V, 50 Hz	1100 lm	E27	T3	155°C
PLFM 100/2 - .	22 W Osram 23 W Philips	TC-SB	230 V, 50 Hz	1440 lm	E27	T6	80°C
PLFM 100/3 - .	12 W Osram 13 W Philips	LED	230 V, 50 Hz	810 lm Osram 1055 lm Philips	E27	T6	80°C
PLFM 20 LED - .	20 W	LED modul	230 V, 50 Hz	1300 lm	-	T6	80°C
PLFM FLASH - .	5 W	XENON	10–100 V DC	4J/90Hz	-	T6	80°C
			110 V AC				
			230 V AC				
PLFM 70 HSE - .	70 W	HSE	230 V, 50 Hz	5900 lm Osram 5600 lm Philips	E27	T4	130°C
	50W	HSE	230 V, 50 Hz	3600 lm Osram 3500 lm Osram	E27	T4	130°C

## MOUNTING

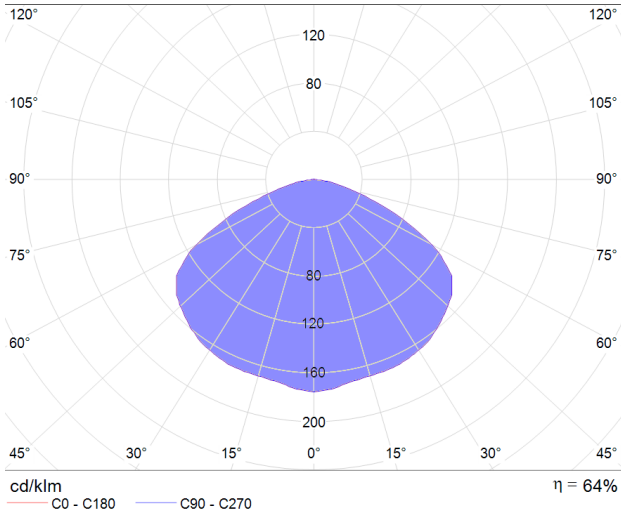
### Pendant, on pipe, wall, ceiling

With vertical suspension on the bolt with ring bolt head M8  
Wall mounting bracket

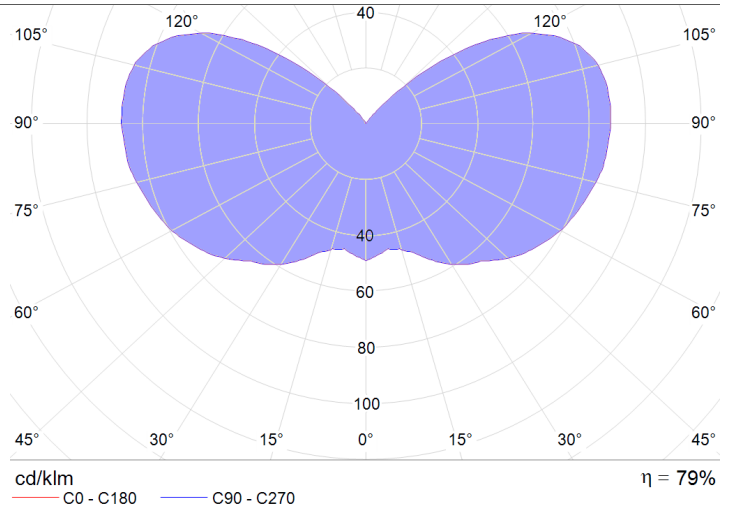


All technical data is relevant at the time of print.

### POLAR CURVE

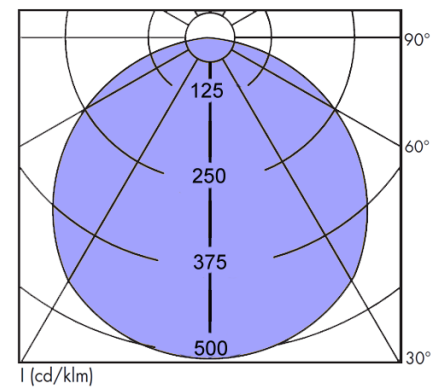
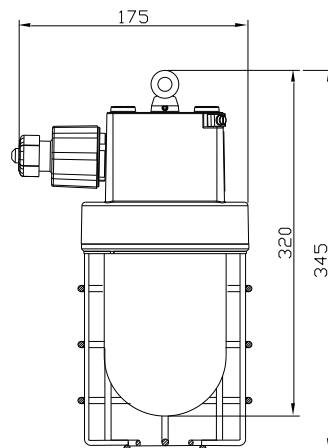
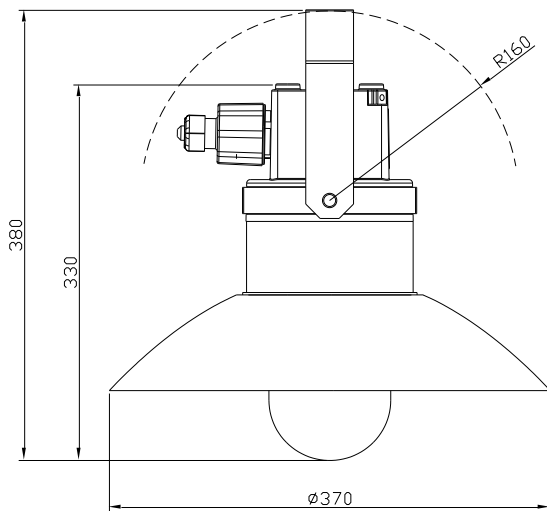


PLFM 100-., PLFM 70 HSE  
With external reflector



PLFM 100-., PLFM 70 HSE  
Without external reflector

### DIMENSION DRAWING (all dimensions in mm)



### SPARE PARTS AND ACCESSORIES

Sketch	Description	Code	Sketch	Description	Code
	Replacement glass PLFM	PLFM 10-120		Ex e cable gland M25	SPU 25
	Wire guard PLFM	PLFM 10-130		Ex e plug M25,	SPC 25
	Gasket PLFM	PLFM 10-140		Light bulb	According to type table
	Lampholder with internal reflector	PLFM 10-150		PLFM fixing bracket for tube R 2"	PLFM 20-120
	Ballast set	PLFM 10-170		PLFM mounting bracket (ceiling mounting)	PLFM 20-130
	Adapter ADP 23	PLFM 20-110		PLFM mounting bracket (wall mounting)	PLFM 20-140

