



STEADY-LIGHT ELEMENTS,
YELLOW AC/DC 24V...230V

General technical details:		
product brand name		SIRIUS
product designation		signaling columns element, optical
Product component / fluorescent materials		No
Design of the optical signal		continous light
Type of voltage		AC/DC
<ul style="list-style-type: none"> • of the operating voltage 		
Operating frequency		
<ul style="list-style-type: none"> • 1 / rated value 	Hz	50
<ul style="list-style-type: none"> • 2 / rated value 	Hz	60
Operating voltage		
<ul style="list-style-type: none"> • for DC / rated value 	V	230 ... 24
<ul style="list-style-type: none"> • at 50 Hz / at AC / rated value 	V	24 ... 230
<ul style="list-style-type: none"> • at 60 Hz / at AC / rated value 	V	24 ... 230
Item designation		
<ul style="list-style-type: none"> • according to DIN 40719 extendable after IEC 204-2 / according to IEC 750 		H
<ul style="list-style-type: none"> • according to DIN EN 61346-2 		P
Mechanical design:		
Color / of the optical signal element		yellow

External diameter / of the signal column element	mm	50
---	----	----

Lamp:

Nature of fluorescent material	filament lamp / LED
---------------------------------------	---------------------

Ambient conditions:

Ambient temperature		
• during operating	°C	-20 ... +50
Protection class IP		IP54
Depth	mm	50
Height	mm	55
Width	mm	50

Certificates/approvals:

General Product Approval	EMC	Declaration of Conformity	Shipping Approval
 GOST	 UL	 C-TICK	 EG-Konf.
			 DNV

Further information:

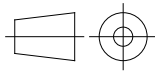
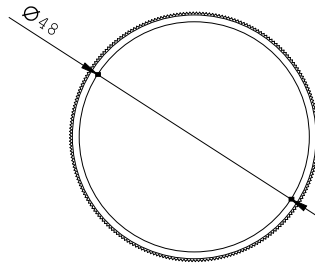
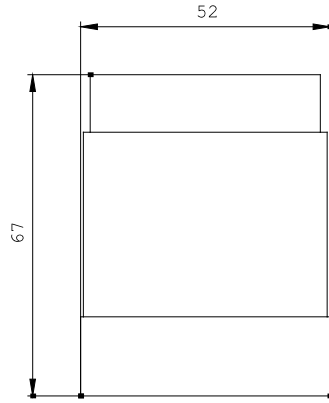
Information- and Downloadcenter (Catalogs, Brochures,...)
<http://www.siemens.com/industrial-controls/catalogs>

Industry Mall (Online ordering system)
<http://www.siemens.com/industrial-controls/mall>

Cax online generator:
<http://www.siemens.com/cax>

Service&Support (Manuals, Certificates, Characteristics, FAQs,...)
<http://support.automation.siemens.com/WW/view/en/8WD4200-1AD/all>

Image database (product images, 2D dimension drawings, 3D models, device circuit diagrams, ...)
http://www.automation.siemens.com/bilddb/cax_en.aspx?mlfb=8WD4200-1AD



\W9.4444;
\W6.8611; 8WD

last change:

Sep 2, 2013