



STEADY-LIGHT ELEMENTS,  
BLUE AC/DC 24V...230V

General technical details:		
<b>product brand name</b>		SIRIUS
<b>product designation</b>		signaling columns element, optical
<b>Product component / fluorescent materials</b>		No
<b>Design of the optical signal</b>		continous light
<b>Type of voltage</b>		AC/DC
<ul style="list-style-type: none"> <li>• of the operating voltage</li> </ul>		
<b>Operating frequency</b>		
<ul style="list-style-type: none"> <li>• 1 / rated value</li> </ul>	Hz	50
<ul style="list-style-type: none"> <li>• 2 / rated value</li> </ul>	Hz	60
<b>Operating voltage</b>		
<ul style="list-style-type: none"> <li>• for DC / rated value</li> </ul>	V	230 ... 24
<ul style="list-style-type: none"> <li>• at 50 Hz / at AC / rated value</li> </ul>	V	24 ... 230
<ul style="list-style-type: none"> <li>• at 60 Hz / at AC / rated value</li> </ul>	V	24 ... 230
<b>Item designation</b>		
<ul style="list-style-type: none"> <li>• according to DIN 40719 extendable after IEC 204-2 / according to IEC 750</li> </ul>		H
<ul style="list-style-type: none"> <li>• according to DIN EN 61346-2</li> </ul>		P
Mechanical design:		
<b>Color / of the optical signal element</b>		blue

<b>External diameter / of the signal column element</b>	mm	50
---	----	----

**Lamp:**

<b>Nature of fluorescent material</b>	filament lamp / LED
---------------------------------------	---------------------

**Ambient conditions:**

<b>Ambient temperature</b>	°C	-20 ... +50
• during operating		
<b>Protection class IP</b>		IP54
<b>Depth</b>	mm	50
<b>Height</b>	mm	55
<b>Width</b>	mm	50

**Certificates/approvals:**

General Product Approval	EMC	Declaration of Conformity	Shipping Approval
 GOST	 UL	 C-TICK	 EG-Konf.
			 DNV

**Further information:**

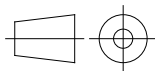
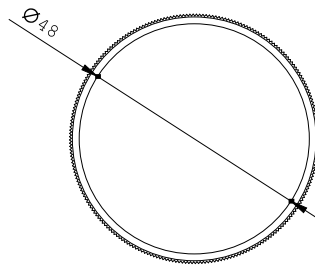
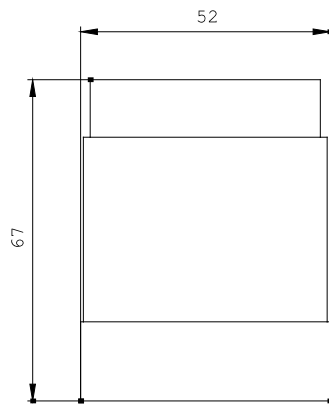
**Information- and Downloadcenter (Catalogs, Brochures,...)**  
<http://www.siemens.com/industrial-controls/catalogs>

**Industry Mall (Online ordering system)**  
<http://www.siemens.com/industrial-controls/mall>

**Cax online generator:**  
<http://www.siemens.com/cax>

**Service&Support (Manuals, Certificates, Characteristics, FAQs,...)**  
<http://support.automation.siemens.com/WW/view/en/8WD4200-1AF/all>

**Image database (product images, 2D dimension drawings, 3D models, device circuit diagrams, ...)**  
[http://www.automation.siemens.com/bilddb/cax\\_en.aspx?mlfb=8WD4200-1AF](http://www.automation.siemens.com/bilddb/cax_en.aspx?mlfb=8WD4200-1AF)



\W9.4444;  
\W6.8611; 8WD

last change:

Sep 2, 2013