



BUZZER ELEMENT 24V AC/DC (PULSAT./CONTIN. TONE ADJUST.)

General technical details:		
product brand name		SIRIUS
product designation		signaling columns element, accoustic
Type of voltage		
<ul style="list-style-type: none"> • of the supply voltage • of the acoustic signal element 		AC/DC
Consumed current / for rated value of supply voltage	mA	25
Supply voltage / 1 / of the acoustic signal element		
<ul style="list-style-type: none"> • at 50 Hz / for AC / rated value • at 60 Hz / for AC / rated value • for DC / rated value 	V	24
	V	24
	V	24
Design of the acoustic signal type		continuous tone / pulse tone
Loudness level	dB	80
Item designation		
<ul style="list-style-type: none"> • according to DIN 40719 extendable after IEC 204-2 / according to IEC 750 • according to DIN EN 61346-2 		H
		P
Mechanical design:		
Color / of the housing		black
External diameter / of the signal column element	mm	50

Ambient conditions:

Ambient temperature

- during operating

°C

-20 ... +50

Protection class IP

IP54

Product function / adjustable acoustic signal

Yes

Depth

mm

50

Height

mm

75

Width

mm

50

Certificates/approvals:

General Product Approval**EMC****Declaration of
Conformity****Shipping Approval**

Further information:

Information- and Downloadcenter (Catalogs, Brochures,...)

<http://www.siemens.com/industrial-controls/catalogs>

Industry Mall (Online ordering system)

<http://www.siemens.com/industrial-controls/mall>

Cax online generator:

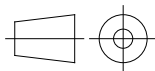
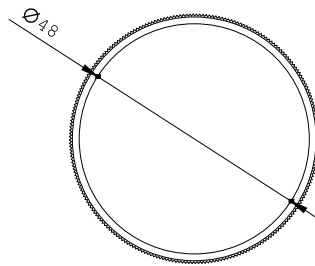
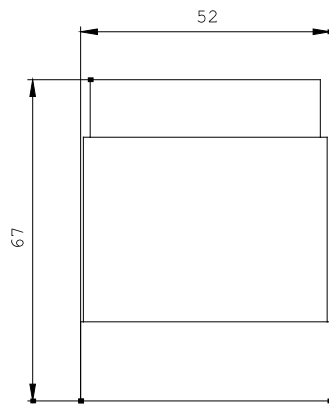
<http://www.siemens.com/cax>

Service&Support (Manuals, Certificates, Characteristics, FAQs,...)

<http://support.automation.siemens.com/WW/view/en/8WD4220-0FA/all>

Image database (product images, 2D dimension drawings, 3D models, device circuit diagrams, ...)

http://www.automation.siemens.com/bilddb/cax_en.aspx?mlfb=8WD4220-0FA



\W9.4444;
\W6.8611; 8WD

last change:

Sep 2, 2013